

weberdry WP 200-F

TWO COMPONENT FLEXIBLE CEMENTITIOUS WATERPROOFING SLURRY

DESCRIPTION :

weberdry WP 200-F is a flexible, polymer-modified, two component cementitious waterproofing coating comprising a latex admixture and a cement base powder incorporating special additives. It is applied to concrete and mortar to prevent water infiltration in severe conditions. The product enhances the ability of substrates to resist sulphate attack and limits carbon dioxide ion penetration.

USES :

- Bathroom, kitchens, under tiled floors and dry yard.
- Refuse Chamber.
- Water tanks and reservoirs.
- Balconies and A/C Ledge.
- RC gutters and planter boxes (but not anti-root product).
- Swimming pools.

FEATURES AND BENEFITS :

- Flexible.
- Good crack bridging capability.
- Pre-packed components, easy to mix and apply.
- Slurry consistency.
- Good adhesion to sound substrates.
- Protects against water penetration and concrete carbonation.
- Non-toxic and non-corrosive.
- Easily applied using brush or roller

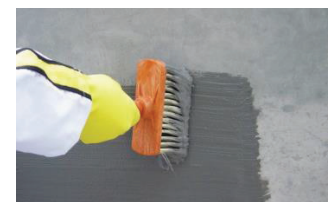
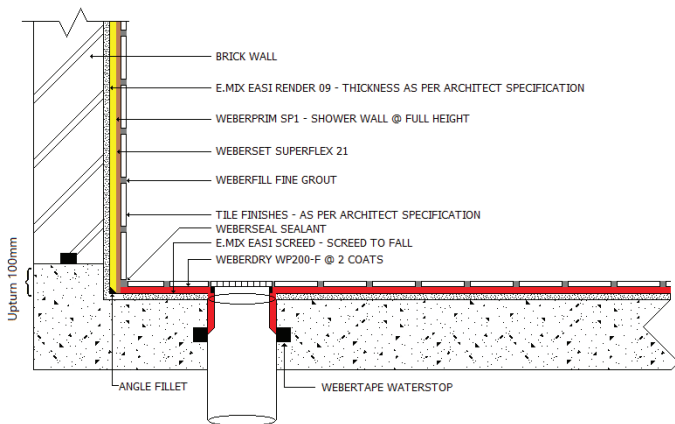
PREPARATION :

- Concrete, cement-sand render / screed and masonry surfaces must be fully cured, dry, sound, flat or true & free of contaminants eg. grease, oil, dust, loose particles, laitance etc.
- Steel / metal surface must be free of scale, rust, grease, oil etc.
- Dampen the surface before coating and remove any excess water to avoid ponding on horizontal surfaces. This is particularly important if the substrate exhibits a high degree of water absorption. Rapid loss of moisture from the waterproof coating may result in pinholes, poor adhesion and overall weakened properties.

MIXING :

- Mix in a clean container by slowly adding Part A (powder) to Part B (liquid) and mixing with a low speed mixer (500 rpm) for 3 - 5 minutes, until a smooth consistent slurry consistency is achieved.

TECHNICAL DATA		
Colour	- Powder	: Grey
	- Liquid	: Milky White
Density	- Powder	: 1600 kg/m ³ (dry)
	- Liquid	: 1020 kg/m ³
pH of mix		: Approx. 10
Shelf Life		: 6 months
Inflammability		: No
Toxicity Hazard		: No
Dry Film Thickness		: 1 - 2 mm
No of coating		: Minimum 2 coats for non-retaining structure : Minimum 3 coats for water retaining structure
Coverage		: 1.5 - 2.0 kg / m ² (for 2 coats) : 2.5 - 3.0 kg / m ² (for 3 coats)
Pot Life (Working Time)		: 2 hours
Touch Dry Time		: 3 - 4 hours
Application Temperature		: Between 5°C - 40°C at normal ambient temperature
Damp Resistance		: Good
Flexibility		: Good
Tensile Strength 28 Days Air Dry ASTM D412 - 16		: > 0.5 N/mm ²
Elongation at break 28 Days Air Dry ASTM D412 - 16		: > 100%
Water Absorption 28 Days Air Dry BS 1881-122 : 2011		: ≈ 0.10%



First coat



Second coat

APPLICATION :

- Apply the first coat in the same direction on to the prepared substrate whilst the substrate is still damp from saturation.
- Leave the first coat to be touch dry for approximately 3 - 4 hours (depends on the site conditions) before applying the second coat.
- Apply the second coat in a crosswise direction to the first application as soon as first coat has hardened.
- The second coat applied must be sufficiently thick, to withstand the anticipated water pressure.
- Ensure that the waterproofing mortar is consistently applied, filling all pores, pinholes or voids. Ensure that the waterproofing is seamlessly applied. Extra care must be taken when applying to joints, cracks, junctions or corners (see note).
- To obtain an effective waterproof tanking system, **weberdry WP 200-F** must be employed throughout the floor areas, with a wall upturn of between 300 - 600mm.
- Avoid application in direct sunlight and strong winds.

Note :

A cement-sand mix or polyurethane sealant "Angle Fillet" can be incorporated at internal corners between the wall to wall or wall to floor joints to relieve the waterproof coating of stresses in the event of movement. Waterproof coating applied over cracks, joints and junctions can be reinforced by incorporating fiberglass net in between coats.

It is the responsibility of users / applicators to determine condition & suitability of all surfaces; prior to the actual application.

CURING :

- The waterproofing must not be wetted whilst it is still curing. It should be protected from direct sunlight, rain or pedestrian traffic.
- 4 days of natural air curing is recommended. However 7 days is recommended for over coating with other cementitious materials such as screeds or tile adhesives etc.
- A water ponding test can be carried out after 4 days of curing.

COVERAGE :

Approximately 2.0kg/m² in 2 coats.

PACKING :

Part A (powder): 25kg bag & Part B (liquid): 9 liters drum

SHELF LIFE / STORAGE :

At least 6 months when stored in dry conditions at ambient temperature.

TECHNICAL SERVICES :

For further details or recommendation please contact our Technical Advisory/Specification Center at 603-6038 9498 (KL) & 604-626 2830 (Penang)

PRECAUTION :

- Do not add water above the recommended stated dosage.
- Use only clean (potable) water.
- Non-Toxic. However, avoid inhaling dust.
- If the product enters the eyes wash out with water and seek medical attention.
- Keep away from children.
- May cause minor irritation to those with sensitive skin. Wear suitable gloves.
- Clean all tools and equipment promptly before the material hardens. Hardened materials can only be removed by mechanical means.

Conditions Of Sales :

Sold subject to Company's Condition of Sale, which is available upon request.

Note :

All instruction and information are provided by us for the general guidance only and are believed to be accurate and complete. Users must exercise special care and caution depending on the conditions and particular purpose of usage and are responsible to ensure that they have consulted our latest literature. To the maximum extent allowed by law, Saint-Gobain Weber (M) Sdn Bhd, its representatives, agents or distributors shall be under no liability for any loss of profits and other economic or physical losses.

Marketing Offices :

SAINT-GOBAIN WEBER (M) SDN BHD (169772-A)

SELANGOR :

No. 29 & 31, Jalan TIAJ 2/1, Taman Industri Alam Jaya,
42300 Bandar Puncak Alam, Selangor D. E, Malaysia.
Tel : 603-6038 9498 / 9497 / 9487 Fax : 603-6038 9507

Website : www.mys.weber

E-Mail : info.webermalaysia@saint-gobain.com

PENANG :

No. 8, Lintang Beringin 2, Jalan Permatang Damar Laut
Diamond Valley Light Industrial Park,
11960 Bayan Lepas Penang, Malaysia.
Tel : 604-626 2830 / 2829 Fax : 604-626 2106



Member Of :

- FMM, Malaysia
- MCIG, Malaysia
- MBAM, Malaysia
- MGBC (Malaysia Green Building Confederation)
- SGBC (Singapore Green Building Council)
- SIRIM Working Group - MS 1294 & MS 1295

OHSMS CERTIFIED TO ISO 45001 (CERT NO: MY16 / 02151)
EMS CERTIFIED TO ISO 14001 (CERT NO: MY13 / 04546)
QMS CERTIFIED TO ISO 9001 (CERT NO: CI / 3693)

WATERPROOFING